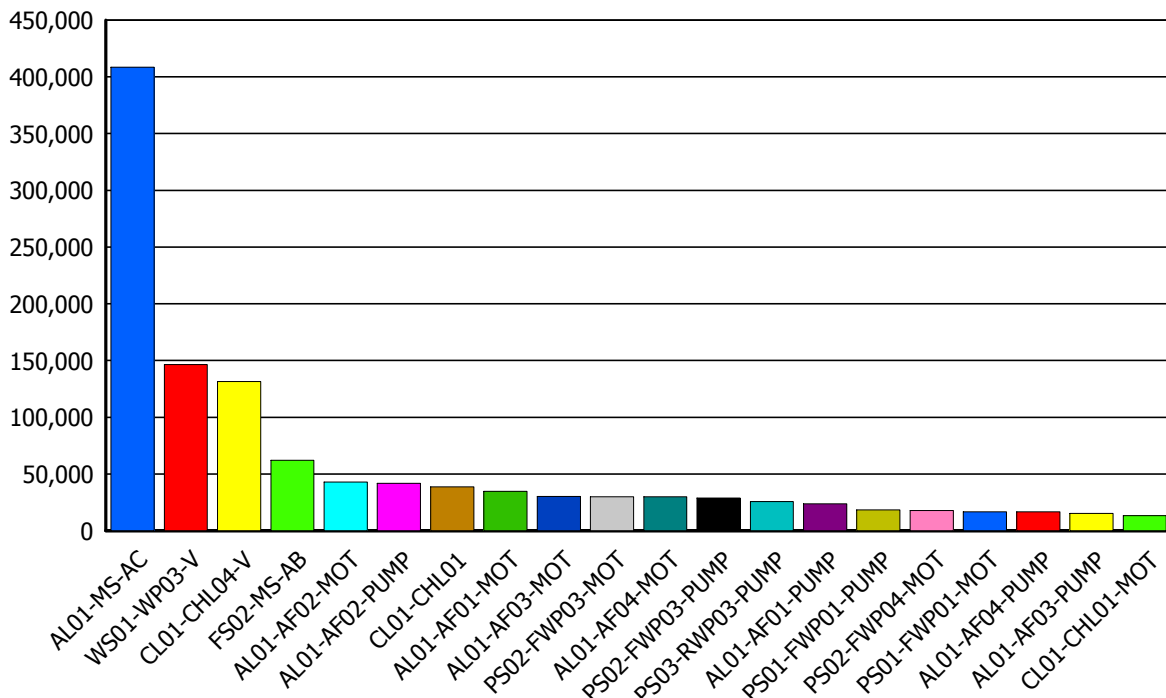


Hight Cost by Equipemt(Graph)

M.081-400-3369:
Chirt.ch@kptoa.com

Finish Date _____ To _____
Equipment _____
Section _____ Work Type _____

No.	Equipment Code	Name	Number of Job	Amount
1	AL01-MS-AC	Air Compressor	15	408,449.08
2	WS01-WP03-V	Valve of Wash Water Pump 3	9	146,338.95
3	CL01-CHL04-V	Valve of Chlorinator 4	6	131,660.00
4	FS02-MS-AB	Air Blower	12	62,165.58
5	AL01-AF02-MOT	Motor of Alum Feed Pump 2	45	42,881.37
6	AL01-AF02-PUMP	Pump of Alum Feed Pump 2	49	41,733.79
7	CL01-CHL01	Chlorinator 1 (Pump Set)	8	38,666.00
8	AL01-AF01-MOT	Motor of Alum Feed Pump 1	43	34,914.47
9	AL01-AF03-MOT	Motor of Alum Feed Pump 3	36	30,241.82
10	PS02-FWP03-MOT	Motor of Filtraed Water Pump 3	14	29,991.84
11	AL01-AF04-MOT	Motor of Alum Feed Pump 4	24	29,909.39
12	PS02-FWP03-PUMP	Pump of Filtraed Water Pump 3	14	28,772.49
13	PS03-RWP03-PUMP	Pump of Raw Water Pump 3	6	25,810.32
14	AL01-AF01-PUMP	Pump of Alum Feed Pump 1	40	23,689.58
15	PS01-FWP01-PUMP	Pump of Filtraed Water Pump 1	25	18,513.70
16	PS02-FWP04-MOT	Motor of Filtraed Water Pump 4	6	17,927.70
17	PS01-FWP01-MOT	Motor of Filtraed Water Pump 1	10	16,784.92
18	AL01-AF04-PUMP	Pump of Alum Feed Pump 4	23	16,681.12
19	AL01-AF03-PUMP	Pump of Alum Feed Pump 3	25	15,366.86
20	CL01-CHL01-MOT	Motor of Chlorinator 1	19	13,248.72



(.....)

(.....)

(.....)

Prepared by

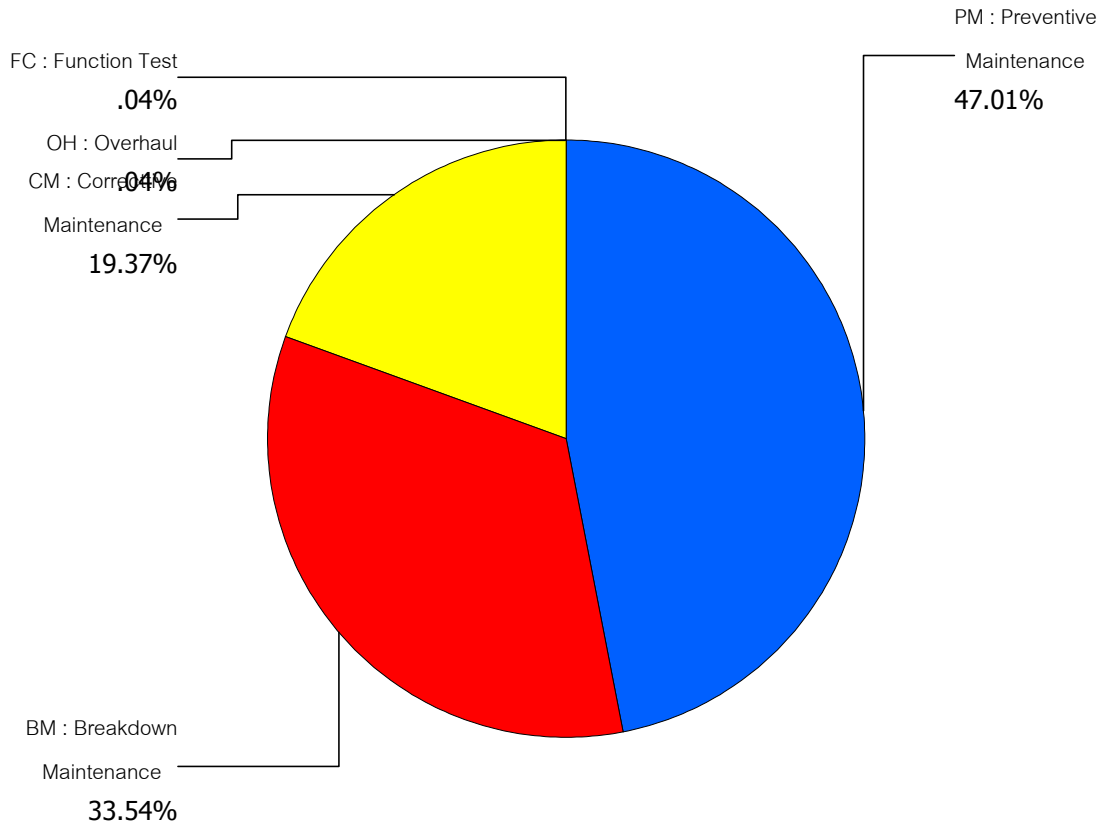
Verify by

Approved by

Cost by Work Type(Graph)

PM : Preventive Maintenance
 Finish Date
 Work Type
 Maint. Section
 To

Work Type	Description	Amount
PM	Preventive Maintenance	609,339.33
BM	Breakdown Maintenance	434,648.72
CM	Corrective Maintenance	250,998.37
OH	Overhaul	577.09
FC	Function Test	498.00



 (.....)
 Prepared by

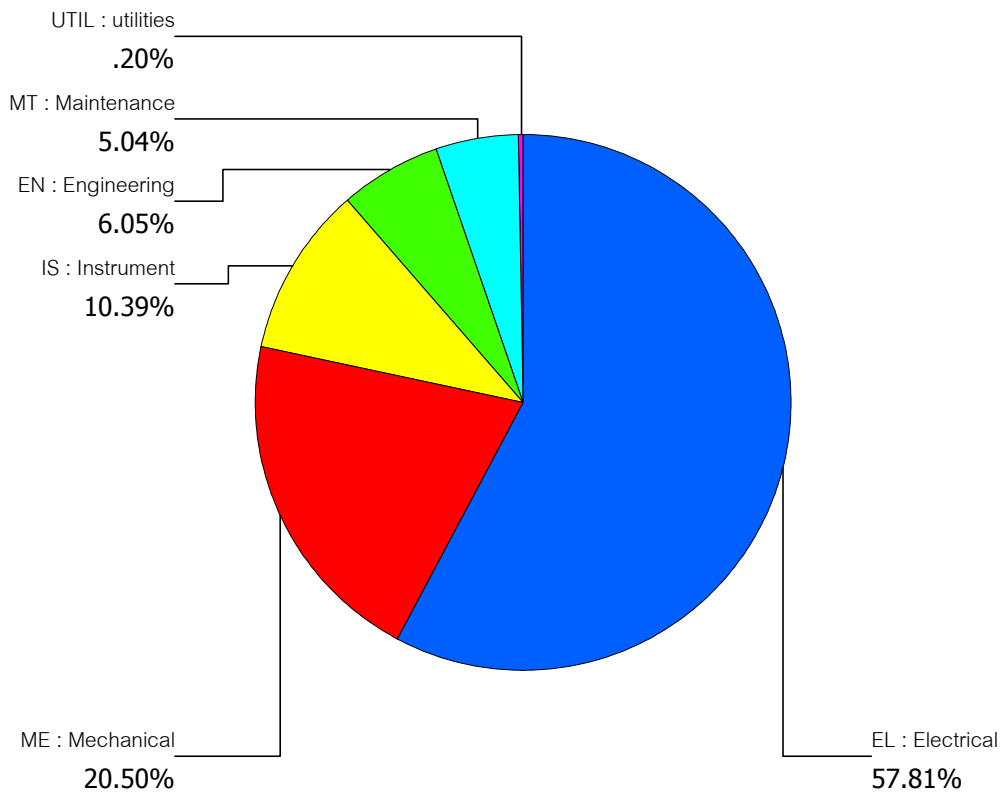
 (.....)
 Verify by

 (.....)
 Approved by

Cost by Maint. Section(Graph)

Finished Date _____ To _____
 WO Type _____
 Maint. Section _____

Maint. Section	Description	Amount
EL	Electrical	749,310.40
ME	Mechanical	265,723.03
IS	Instrument	134,667.69
EN	Engineering	78,466.40
MT	Maintenance	65,269.99
UTIL	utilities	2,624.00



 (.....)
 Prepared by

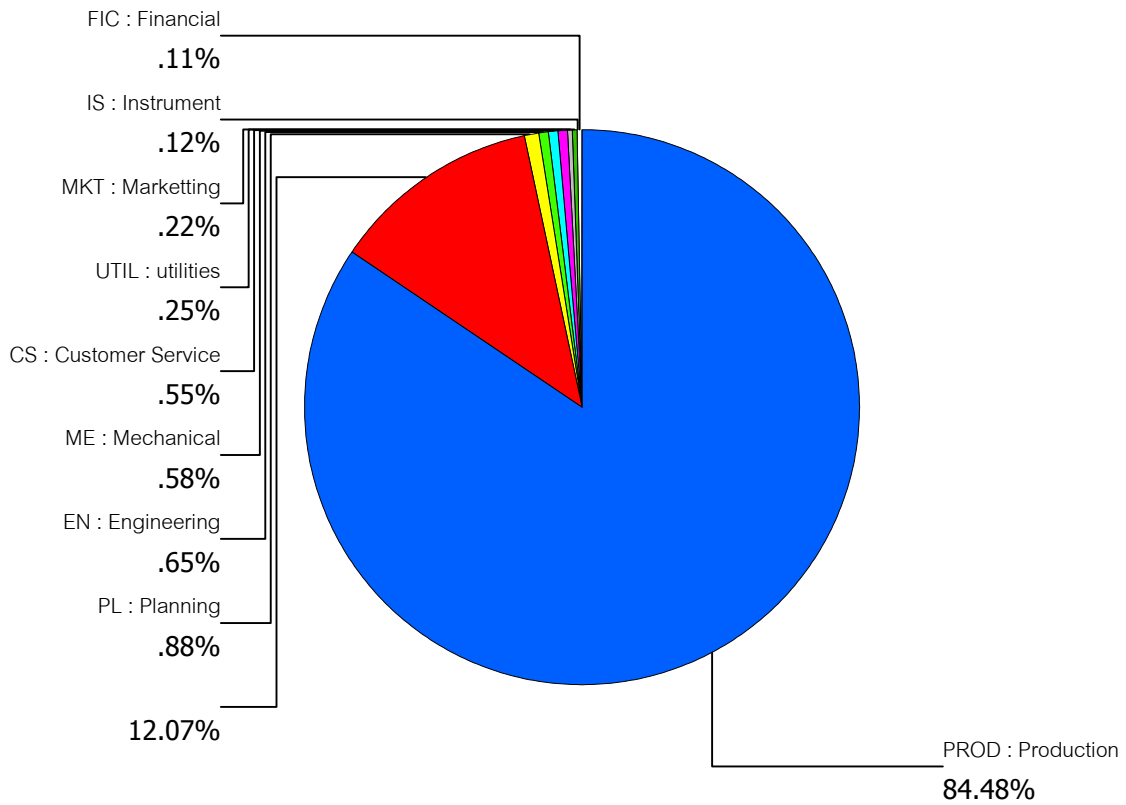
 (.....)
 Verify by

 (.....)
 Approved by

Cost by Request Section(Graph)

Finished Date To
WO Type
Request Section

Request Section	Description	Amount
PROD	Production	580,129.00
		82,920.82
PL	Planning	6,011.42
EN	Engineering	4,473.56
ME	Mechanical	4,012.68
CS	Customer Service	3,765.00
UTIL	utilities	1,748.14
MKT	Marketting	1,484.53
IS	Instrument	851.40
FIC	Financial	757.63
MT	Maintenance	568.00



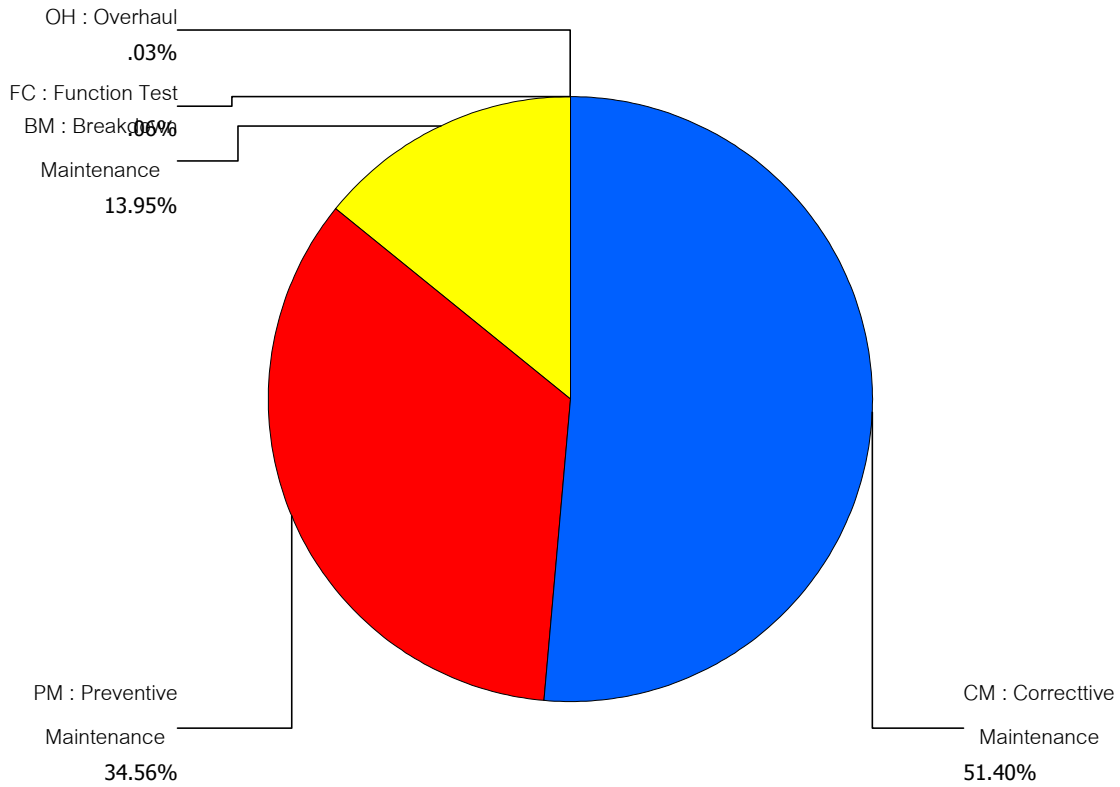
(.....)
(.....)
(.....)

Prepared by
Verify by
Approved by

Man-Hour by Work Type(Graph)

Finish Date _____ To _____
WO Type _____
Section (Maint) _____

WO Type	Description	Man-Hour
CM	Corrective Maintenance	3,495.50
PM	Preventive Maintenance	2,350.32
BM	Breakdown Maintenance	948.50
FC	Function Test	4.00
OH	Overhaul	2.00



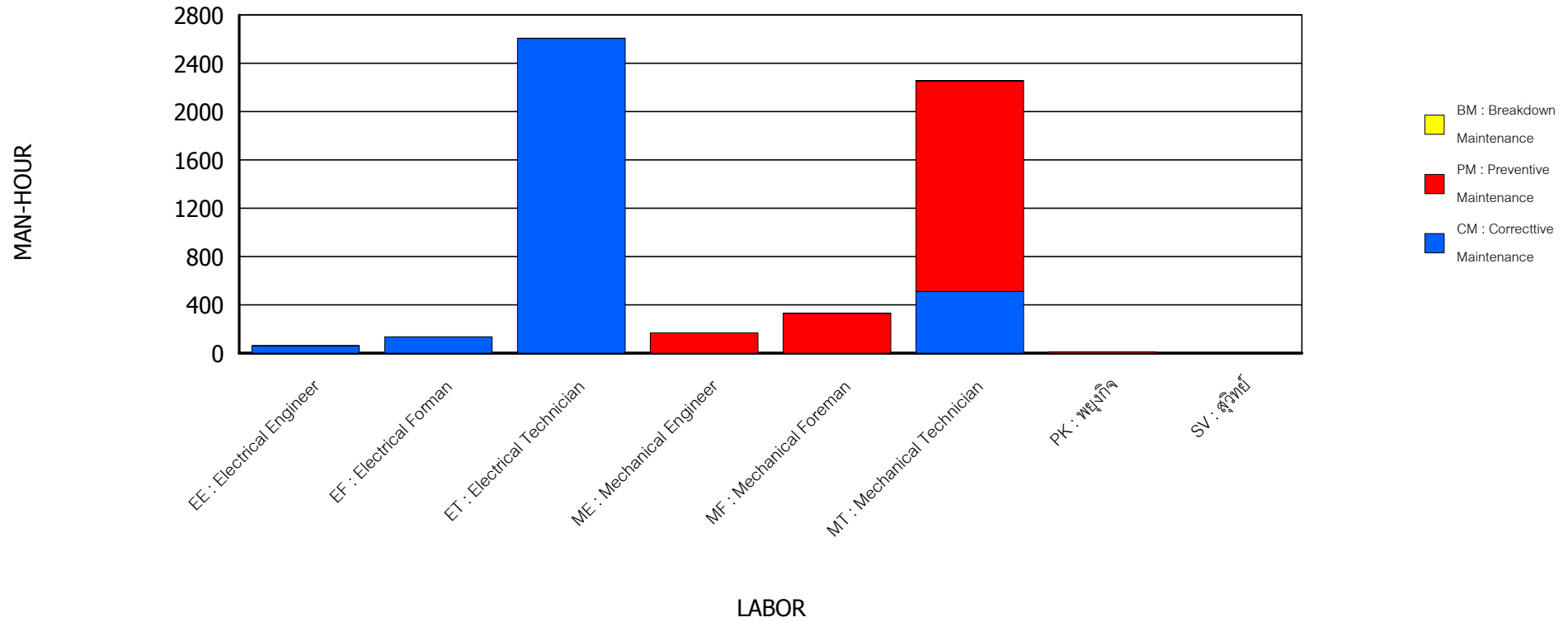
(.....)
Prepared by

(.....)
Verify by

(.....)
Approved by

Man-Hour by Labor (Graph)

Finish Date 01/01/2001 To 31/12/2001
Work Type



(.....)

Prepared by

O:\ZEALDATA\ZEALDATA Demo 2008\E04020055.rpt

(.....)

Verify by

(.....)

Approved by

Working Hour by Hierarchy

Finish Date To
Equipment No.
WO Type
Section (Maint)

Equipment No.	Name	Working Time
└ 0101	test equipment	2.00
└ 121M01	Hydrolic Pump	5.00
└ A	Factory A	107.00
└└ A-L1	Factory A, Line 1	9.00
└└└ A-L1-01	Factory A, Line 1, Process 1	9.00
└└└└ A-L1-01-MOT-01	Motor	5.00
└└└└ A-L1-01-PMP-01	Pump	4.00
└└└ A-L1-02	Factory A, Line 1, Process 2	
└└ A-L2	Factory A, Line 2	
└ AL01	Raw Water Station	1,212.82
└└ AL01-AF01	Alum Feed Pump 1 (Pump Set)	615.76
└└└ AL01-AF01-MOT	Motor of Alum Feed Pump 1	387.50
└└└└ ABB_001	ABB Motor xxxx	
└└└ AL01-AF01-PUMP	Pump of Alum Feed Pump 1	94.93
└└└ AL01-AF01-ST	Starter of Alum Feed Pump 1	5.00
└└└ AL01-AF01-V	Valve of Alum Feed Pump 1	79.33
└└└ FWP002	Filtraed Water Pump No.1	
└└ AL01-AF02	Alum Feed Pump 2 (Pump Set)	187.03
└└└ AL01-AF02-MOT	Motor of Alum Feed Pump 2	56.50
└└└ AL01-AF02-PUMP	Pump of Alum Feed Pump 2	81.50
└└└ AL01-AF02-ST	Starter of Alum Feed Pump 2	9.53
└└└ AL01-AF02-V	Valve of Alum Feed Pump 2	30.00
└└ AL01-AF03	Alum Feed Pump 3 (Pump Set)	93.43
└└└ AL01-AF03-MOT	Motor of Alum Feed Pump 3	48.93
└└└ AL01-AF03-PUMP	Pump of Alum Feed Pump 3	37.00
└└└ AL01-AF03-ST	Starter of Alum Feed Pump 3	
└└└ AL01-AF03-V	Valve of Alum Feed Pump 3	0.50
└└ AL01-AF04	Alum Feed Pump 4 (Pump Set)	102.60
└└└ AL01-AF04-MOT	Motor of Alum Feed Pump 4	45.50
└└└ AL01-AF04-PUMP	Pump of Alum Feed Pump 4	37.00
└└└ AL01-AF04-ST	Starter of Alum Feed Pump 4	1.50
└└└ AL01-AF04-V	Valve of Alum Feed Pump 4	17.00
└└ AL01-MS	Miscellaneous	80.50
└└└ AL01-MS-AC	Air Compressor	80.50
└└└ AL01-MS-DP	Drain Pump	
└ CL01	Clorine Pumping Station	179.00
└└ CL01-CHL01	Chlorinator 1 (Pump Set)	93.50
└└└ CL01-CHL01-MOT	Motor of Chlorinator 1	18.00
└└└ CL01-CHL01-PUMP	Pump of Chlorinator 1	7.00
└└└ CL01-CHL01-ST	Starter of Chlorinator 1	16.00
└└└ CL01-CHL01-V	Valve of Chlorinator 1	
└└ CL01-CHL02	Chlorinator 2 (Pump Set)	39.00
└└└ CL01-CHL02-MOT	Motor of Chlorinator 2	3.00
└└└ CL01-CHL02-PUMP	Pump of Chlorinator 2	7.00
└└└ CL01-CHL02-ST	Starter of Chlorinator 2	
└└└ CL01-CHL02-V	Valve of Chlorinator 2	
└└ CL01-CHL03	Chlorinator 3 (Pump Set)	9.00
└└└ CL01-CHL03-MOT	Motor of Chlorinator 3	5.00
└└└ CL01-CHL03-PUMP	Pump of Chlorinator 3	3.00
└└└ CL01-CHL03-ST	Starter of Chlorinator 3	
└└└ CL01-CHL03-V	Valve of Chlorinator 3	
└└ CL01-CHL04	Chlorinator 4 (Pump Set)	37.50
└└└ CL01-CHL04-MOT	Motor of Chlorinator 4	2.00
└└└ CL01-CHL04-PUMP	Pump of Chlorinator 4	13.00
└└└ CL01-CHL04-ST	Starter of Chlorinator 4	
└└└ CL01-CHL04-V	Valve of Chlorinator 4	7.50
└└ CL01-MS	Miscellaneous	
└ FL-001	ForkLift 001	
└ FM	Foil Mill	3.00
└└ FM01	Foil Mill 1	
└└ FM02	Foil Mill 2	3.00
└└└ FM0201	Pay off gear system	3.00

(.....)

(.....)

(.....)

Prepared by

Verify by

Approved by

Mean Time Between Failure (MTBF)

Down Date 01/01/2007 To 31/12/2007
Equipment No. Process

Equipment No.	Name	Downtime Cause	WO No.	Down Date	Time	Up Date	Time	Downtime
AL01-AF01-MOT	Motor of Alum Feed Pump 1		WO300272	22/06/2007	06:00	22/06/2007	17:00	660
							MTBF	<u>249,480</u>
AL01-AF01-PUMP	Pump of Alum Feed Pump 1		WO300254	09/02/2007	08:00	09/02/2007	12:00	240
							MTBF	<u>58,080</u>
AL01-AF02-MOT	Motor of Alum Feed Pump 2		WO300243	09/01/2007	12:00	09/01/2007	15:00	180
			WO300246	12/01/2007	06:00	12/01/2007	10:00	240
		PROCESS Process Down	WO300250	30/01/2007	08:00	30/01/2007	17:00	540
				06/09/2007	08:00	06/09/2007	12:00	240
			WO-000001	20/11/2007	06:00	20/11/2007	13:00	420
							MTBF	<u>93,144</u>
AL01-AF02-PUMP	Pump of Alum Feed Pump 2		WO300244	09/01/2007	08:00	09/01/2007	17:00	540
			WO300251	02/02/2007	10:00	02/02/2007	13:00	180
			WO300259	08/03/2007	02:00	08/03/2007	09:00	420
			WO300274	28/06/2007	06:00	28/06/2007	12:00	360
			WO300299	05/09/2007	12:00	05/09/2007	17:00	300
			WO-000003	20/12/2007	08:00	20/12/2007	12:00	240
							MTBF	<u>84,740</u>
AL01-AF03-MOT	Motor of Alum Feed Pump 3		WO300279	23/07/2007	12:00	23/07/2007	17:00	300
			WO300282	26/07/2007	14:00	26/07/2007	21:30	450
							MTBF	<u>149,310</u>
AL01-AF03-PUMP	Pump of Alum Feed Pump 3		WO300248	22/01/2007	12:00	22/01/2007	18:00	360
							MTBF	<u>32,400</u>
AL01-AF04-MOT	Motor of Alum Feed Pump 4		WO300245	11/01/2007	06:00	11/01/2007	12:30	390
			WO300249	26/01/2007	08:00	26/01/2007	21:00	780
							MTBF	<u>18,765</u>
AL01-AF04-PUMP	Pump of Alum Feed Pump 4		WO300263	19/04/2007	10:00	19/04/2007	15:00	300
			WO300277	19/07/2007	08:00	19/07/2007	12:00	240
			WO300280	25/07/2007	10:00	25/07/2007	12:00	120
			WO300297	28/08/2007	11:00	28/08/2007	14:00	180
							MTBF	<u>86,400</u>
A-L1-01-MOT-01	Motor		WO300268	25/05/2007	14:00	25/05/2007	18:00	240
			WO300284	02/08/2007	06:00	02/08/2007	22:00	960
							MTBF	<u>154,140</u>
A-L1-01-PMP-01	Pump		WO300278	20/07/2007	10:00	20/07/2007	12:00	120
							MTBF	<u>290,040</u>
CL01-CHL01-MOT	Motor of Chlorinator 1		WO300252	05/02/2007	08:00	05/02/2007	12:00	240
			WO300273	27/06/2007	06:00	27/06/2007	17:00	660
			WO300287	16/08/2007	06:00	16/08/2007	10:00	240

(.....)

Prepared by

O:\ZEALDATA\ZEALDATA Demo 2008\E04040005.rpt

(.....)

Verify by

(.....)

Approved by

Mean Time To Repair (MTTR)

Down Date 01/01/2007 To 31/12/2007
Equipment No. Process

Equipment No.	Name	Downtime Cause	WO No.	Down Date	Time	Up Date	time	Downtime
AL01-AF01-MOT	Motor of Alum Feed Pump 1		WO300272	22/06/2007	06:00	22/06/2007	17:00	660
							MTTR	<u>660</u>
AL01-AF01-PUMP	Pump of Alum Feed Pump 1		WO300254	09/02/2007	08:00	09/02/2007	12:00	240
							MTTR	<u>240</u>
AL01-AF02-MOT	Motor of Alum Feed Pump 2		WO300243	09/01/2007	12:00	09/01/2007	15:00	180
			WO300246	12/01/2007	06:00	12/01/2007	10:00	240
		PROCESS Process Down	WO300250	30/01/2007	08:00	30/01/2007	17:00	540
				06/09/2007	08:00	06/09/2007	12:00	240
			WO-000001	20/11/2007	06:00	20/11/2007	13:00	420
							MTTR	<u>324</u>
AL01-AF02-PUMP	Pump of Alum Feed Pump 2		WO300244	09/01/2007	08:00	09/01/2007	17:00	540
			WO300251	02/02/2007	10:00	02/02/2007	13:00	180
			WO300259	08/03/2007	02:00	08/03/2007	09:00	420
			WO300274	28/06/2007	06:00	28/06/2007	12:00	360
			WO300299	05/09/2007	12:00	05/09/2007	17:00	300
			WO-000003	20/12/2007	08:00	20/12/2007	12:00	240
							MTTR	<u>340</u>
AL01-AF03-MOT	Motor of Alum Feed Pump 3		WO300279	23/07/2007	12:00	23/07/2007	17:00	300
			WO300282	26/07/2007	14:00	26/07/2007	21:30	450
							MTTR	<u>375</u>
AL01-AF03-PUMP	Pump of Alum Feed Pump 3		WO300248	22/01/2007	12:00	22/01/2007	18:00	360
							MTTR	<u>360</u>
AL01-AF04-MOT	Motor of Alum Feed Pump 4		WO300245	11/01/2007	06:00	11/01/2007	12:30	390
			WO300249	26/01/2007	08:00	26/01/2007	21:00	780
							MTTR	<u>585</u>
AL01-AF04-PUMP	Pump of Alum Feed Pump 4		WO300263	19/04/2007	10:00	19/04/2007	15:00	300
			WO300277	19/07/2007	08:00	19/07/2007	12:00	240
			WO300280	25/07/2007	10:00	25/07/2007	12:00	120
			WO300297	28/08/2007	11:00	28/08/2007	14:00	180
							MTTR	<u>210</u>
A-L1-01-MOT-01	Motor		WO300268	25/05/2007	14:00	25/05/2007	18:00	240
			WO300284	02/08/2007	06:00	02/08/2007	22:00	960
							MTTR	<u>600</u>
A-L1-01-PMP-01	Pump		WO300278	20/07/2007	10:00	20/07/2007	12:00	120
							MTTR	<u>120</u>
CL01-CHL01-MOT	Motor of Chlorinator 1		WO300252	05/02/2007	08:00	05/02/2007	12:00	240
			WO300273	27/06/2007	06:00	27/06/2007	17:00	660
			WO300287	16/08/2007	06:00	16/08/2007	10:00	240

(.....)

Prepared by

O:\ZEALDATA\ZEALDATA Demo 2008\E04040006.rpt

(.....)

Verify by

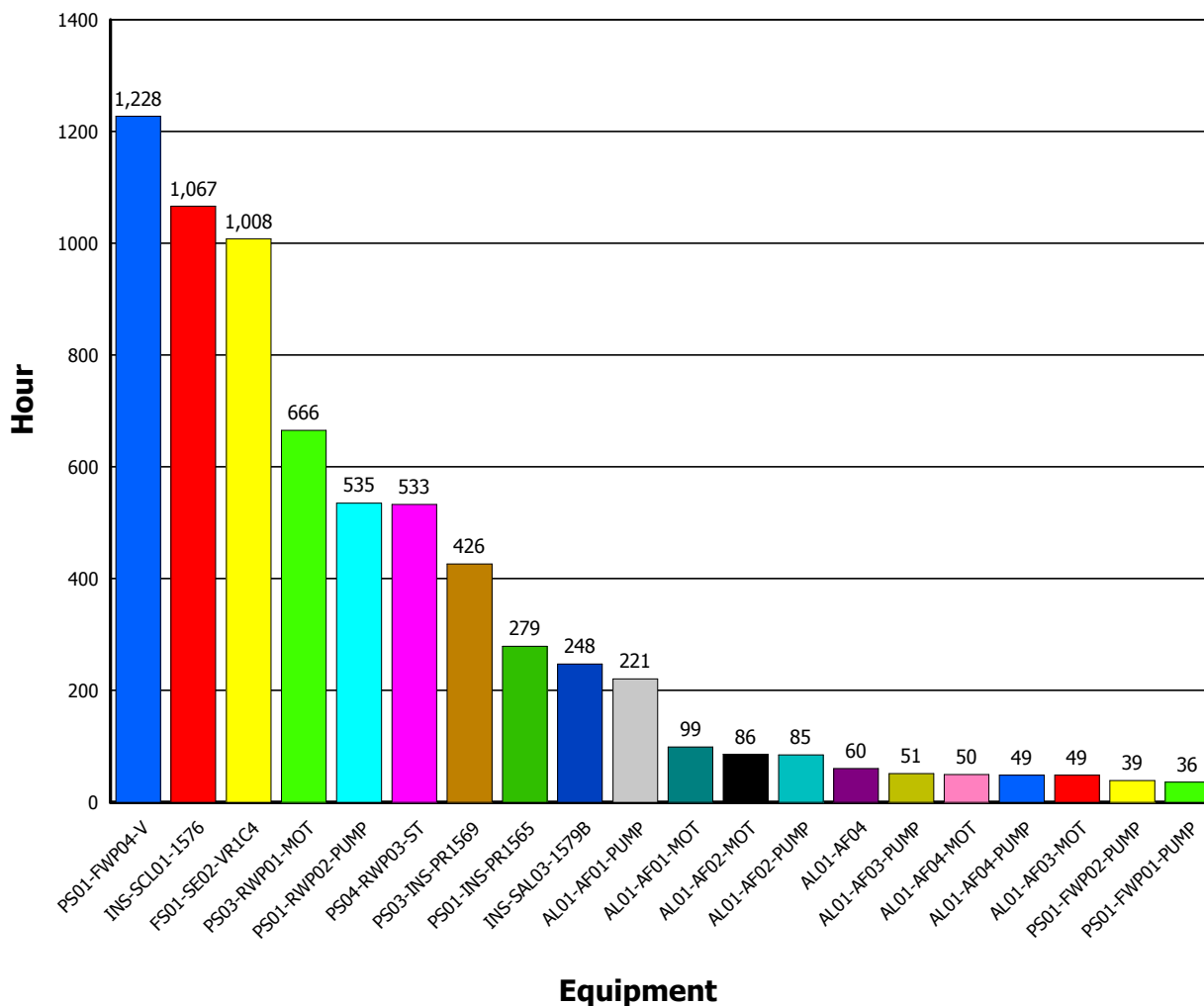
(.....)

Approved by

High Equipment Downtime(Graph)

Down Date To
Equipment Code

No.	Equipment Code	Name	Average Downtime (Hour)	Times (Times)	Downtime (Hour)
1	PS01-FWP04-V	Valve of Filtraed Water Pump 4	409.17	3	1,227.50
2	INS-SCL01-1576	Staff Gauge of โรงจ่ายคลอรีน 1	1,066.50	1	1,066.50
3	FS01-SE02-VR1C4	Sluice Valve Row 1 Column 4	1,008.00	1	1,008.00
4	PS03-RWP01-MO	Motor of Raw Water Pump 1	332.75	2	665.50
5	PS01-RWP02-PUM	Pump of Raw Water Pump 2	535.33	1	535.33
6	PS04-RWP03-ST	Starter of Raw Water Pump 3	532.83	1	532.83
7	PS03-INS-PR1569	Pressure Recorder	426.25	1	426.25
8	PS01-INS-PR1565	Pressure Recorder	279.00	1	279.00
9	INS-SAL03-1579B	Staff Gauge of ระดับน้ำยาสารส้มถัง 2	247.50	1	247.50
10	AL01-AF01-PUMP	Pump of Alum Feed Pump 1	15.78	14	220.85
11	AL01-AF01-MOT	Motor of Alum Feed Pump 1	5.50	18	99.02
12	AL01-AF02-MOT	Motor of Alum Feed Pump 2	5.06	17	86.00
13	AL01-AF02-PUMP	Pump of Alum Feed Pump 2	5.31	16	85.00
14	AL01-AF04	Alum Feed Pump 4 (Pump Set)	30.21	2	60.42
15	AL01-AF03-PUMP	Pump of Alum Feed Pump 3	5.10	10	51.00
16	AL01-AF04-MOT	Motor of Alum Feed Pump 4	6.19	8	49.50
17	AL01-AF04-PUMP	Pump of Alum Feed Pump 4	5.39	9	48.52
18	AL01-AF03-MOT	Motor of Alum Feed Pump 3	4.85	10	48.50
19	PS01-FWP02-PUM	Pump of Filtraed Water Pump 2	13.00	3	39.00
20	PS01-FWP01-PUM	Pump of Filtraed Water Pump 1	4.50	8	36.00

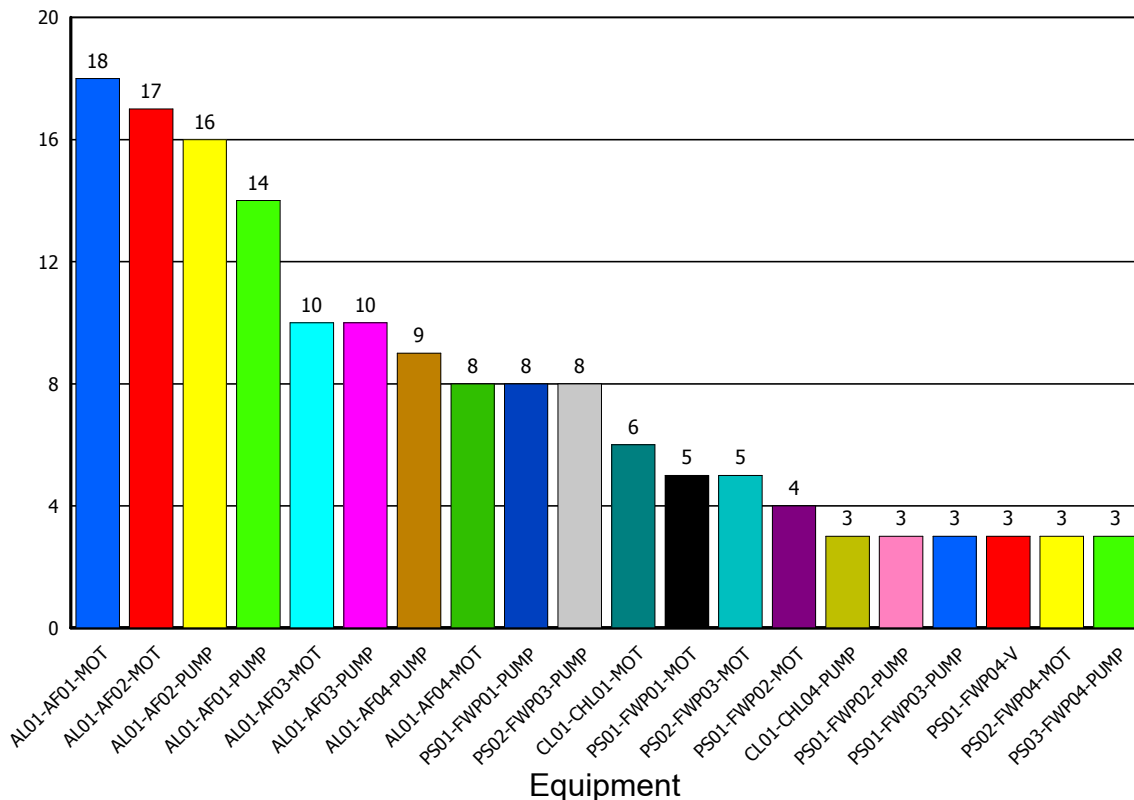


(.....) (.....) (.....)
 Prepared by Verify by Approved by
 O:\ZEALDATA\ZEALDATA Demo 2008\E04040012.rpt

High Times of Equipment Downtime(Grapl

Down Date To
Equipment Code

No.	Equipment Code	Name	Average Downtime (Hour)	Downtime (Hour)	Times (Times)
1	AL01-AF01-MOT	Motor of Alum Feed Pump 1	5.50	99.02	18
2	AL01-AF02-MOT	Motor of Alum Feed Pump 2	5.06	86.00	17
3	AL01-AF02-PUMP	Pump of Alum Feed Pump 2	5.31	85.00	16
4	AL01-AF01-PUMP	Pump of Alum Feed Pump 1	15.78	220.85	14
5	AL01-AF03-MOT	Motor of Alum Feed Pump 3	4.85	48.50	10
6	AL01-AF03-PUMP	Pump of Alum Feed Pump 3	5.10	51.00	10
7	AL01-AF04-PUMP	Pump of Alum Feed Pump 4	5.39	48.52	9
8	AL01-AF04-MOT	Motor of Alum Feed Pump 4	6.19	49.50	8
9	PS01-FWP01-PUM	Pump of Filtraed Water Pump 1	4.50	36.00	8
10	PS02-FWP03-PUM	Pump of Filtraed Water Pump 3	4.13	33.00	8
11	CL01-CHL01-MOT	Motor of Chlorinator 1	4.83	29.00	6
12	PS01-FWP01-MOT	Motor of Filtraed Water Pump 1	3.60	18.00	5
13	PS02-FWP03-MOT	Motor of Filtraed Water Pump 3	3.40	17.00	5
14	PS01-FWP02-MOT	Motor of Filtraed Water Pump 2	4.75	19.00	4
15	CL01-CHL04-PUM	Pump of Chlorinator 4	5.33	16.00	3
16	PS01-FWP02-PUM	Pump of Filtraed Water Pump 2	13.00	39.00	3
17	PS01-FWP03-PUM	Pump of Filtraed Water Pump 3	4.67	14.00	3
18	PS01-FWP04-V	Valve of Filtraed Water Pump 4	409.17	1,227.50	3
19	PS02-FWP04-MOT	Motor of Filtraed Water Pump 4	3.33	10.00	3
20	PS03-FWP04-PUM	Pump of Filtraed Water Pump 4	3.17	9.50	3



(.....)
Prepared by

(.....)
Verify by

(.....)
Approved by

PM Monthly Plan by EQ No.

EQ Code	EQ Name	PM Code	PM Name	January 2009																															
				1	2	3	4	5	6	7	8	9	10	11	12	13	14	15	16	17	18	19	20	21	22	23	24	25	26	27	28	29	30	31	
0101	test equipment	0101/1M	งานตรวจสอบ ประจำเดือน		X																														
AL01	Raw Water Station	TEST	TEST										X								X								X						
AL01	Raw Water Station	TEST1	TEST					X																											
AL01-AF01	Alum Feed Pump 1 (Pump Set)	PM0109	AL01-AF01/1M																					X											
AL01-AF01-V	Valve of Alum Feed Pump 1	PM0115	AL01-AF01-V/3M										X																						
AL01-MS-AC	Air Compressor	PM0001	Air Compressor 3 Month (X	
AL01-MS-AC	Air Compressor	PM0002	Air-Compressor 6 Month																															X	
AL01-MS-AC	Air Compressor	PM0106	Air Compressor 3 Month (X																											
A-L1-01-PMP-0	Pump	TEST001	A-L1-01-PMP-01 / 3 Mont					X						X								X											X		
CL01-CHL01	Chlorinator 1 (Pump Set)	PM0004	Chlorinator 4 Month																																
CL01-CHL01-P	Pump of Chlorinator 1	PM0114	CL01-CHL01-PUMP/3M									X																							
CL01-CHL04	Chlorinator 4 (Pump Set)	PM0010	Chlorinator 4 Month					X																											
NU01-MS-AC	Air Compressor	PM0015	Air-Compressor 6 Month	X																															
PS04-MS-AC	Air Compressor	PM0092	Air-Compressor 6 Month										X																						

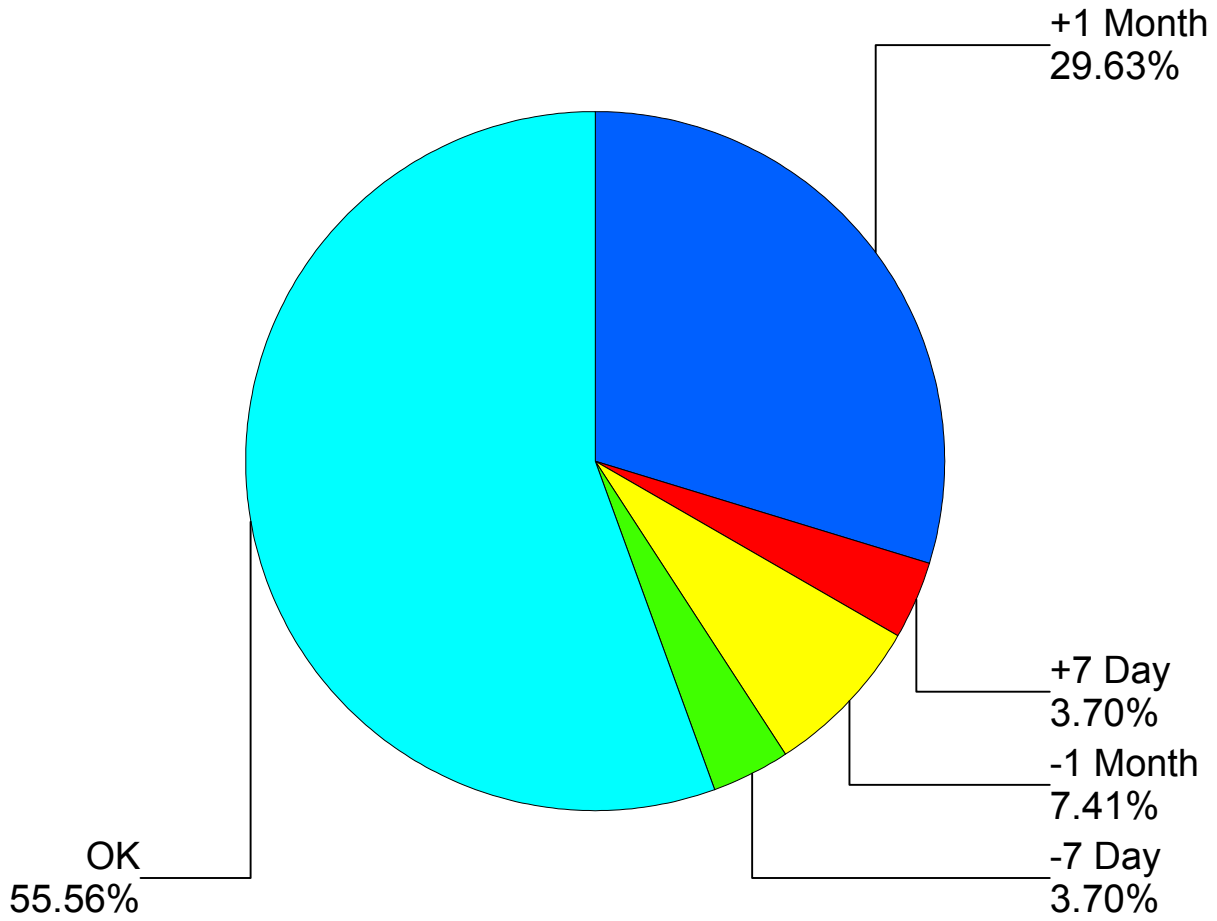
.....
Prepared by
O:\ZEALDATA\ZEALDATA Demo 2008\E02020231.rpt

.....
Verify by

.....
Approved by

PM Accuracy (Graph)

Start Date To
PM No. Equipment No.



(.....) (.....) (.....)

Prepared by Verify by Approved by

O:\ZEALDATA\ZEALDATA Demo 2008\E03020030.rpt

PM Budget by Year

Expense Type	Jan-09	Feb-09	Mar-09	Apr-09	May-09	Jun-09	Jul-09	Aug-09	Sep-09	Oct-09	Nov-09	Dec-09	Total
01 Labor Cost	6,512.00	1,499,596.00	590.00	4,708.00	1,502,692.00	590.00	5,072.00	1,499,596.00	2,030.00	4,708.00	1,501,252.00	590.00	6,027,936.00
02 Material Cost	7,840.72	2,378.64	1,808.64	4,554.94	2,378.64	1,808.64	7,840.72	2,378.64	1,808.64	4,554.94	2,378.64	1,808.64	41,540.44
03 Tool Cost	2,000.00	45.00		2,000.00	45.00		2,000.00	45.00		2,000.00	45.00		8,180.00
04 Other Cost	5,200.00	120,000.00		5,200.00	120,000.00		5,200.00	120,000.00		5,200.00	120,000.00		500,800.00
05 Non-Stock Cost	3,714.66	298.66	298.66	5,442.66	2,602.66	298.66	1,410.66	4,330.66	2,602.66	1,410.66	298.66	4,330.66	27,039.92
Total	25,267.38	1,622,318.30	2,697.30	21,905.60	1,627,718.30	2,697.30	21,523.38	1,626,350.30	6,441.30	17,873.60	1,623,974.30	6,729.30	6,605,496.36

.....

Prepared by

O:\ZEALDATA\ZEALDATA Demo 2008\E02020130.rpt

.....

Verify by

.....

Approved by

Planing Labor Usage

			2009												
Craft		Cost	Total Cost	Jan	Feb	Mar	Apr	May	Jun	Jul	Aug	Sup	Oct	Nov	Dec
EE	Electrical Engineer	74.00	359,344.00	13.00	1,201.00	1.00	11.00	1,201.00	1.00	13.00	1,201.00	1.00	11.00	1,201.00	1.00
EF	Electrical Foreman	52.00	3,224.00	3.00	9.50	3.00	3.00	9.50	3.00	3.00	9.50	3.00	3.00	9.50	3.00
ET	Electrical Technician	36.00	4,147,632.00	26.00	28,773.00	10.00	8.00	28,785.00	10.00	14.00	28,773.00	22.00	8.00	28,773.00	10.00
ME	Mechanical Engineer	78.00	189,228.00	5.00	600.00	0.00	5.00	603.00	0.00	5.00	600.00	0.00	5.00	603.00	0.00
MF	Mechanical Foreman	54.00	2,484.00	10.00	0.00	0.00	10.00	3.00	0.00	10.00	0.00	0.00	10.00	3.00	0.00
MT	Mechanical Technician	42.00	1,326,024.00	84.00	7,800.00	0.00	60.00	7,854.00	0.00	60.00	7,800.00	24.00	60.00	7,830.00	0.00
			6,027,936.00	141.00	38,383.50	14.00	97.00	38,455.50	14.00	105.00	38,383.50	50.00	97.00	38,419.50	14.00

 (.....)

Prepared by

 (.....)

Verify by

 (.....)

Approved by

Planing Stock Usage

				2009											
Inventory Code	Description	Quantity	Total Cost	Jan.	Feb.	Mar.	Apr.	May.	Jun.	Jul.	Aug.	Sep.	Oct.	Nov.	Dec.
000B045	BEARING SKF 16003	24.00	2,808.00	2.00	2.00	2.00	2.00	2.00	2.00	2.00	2.00	2.00	2.00	2.00	2.00
000E009	ELECTRODE WELDING YAWATA FT5	12.00	775.92	1.00	1.00	1.00	1.00	1.00	1.00	1.00	1.00	1.00	1.00	1.00	1.00
000L030	LUBE CASTROL PERECTOR T 68	120.00	6,562.80	30.00			30.00			30.00			30.00		
99999-1	Gasget #78900	81.00	19,008.00	16.00			19.00	4.00		12.00	7.00	4.00	12.00		7.00
		237.00	29,154.72	49.00	3.00	3.00	52.00	7.00	3.00	45.00	10.00	7.00	45.00	3.00	10.00

(.....)

Prepared by

(.....)

Verify by

(.....)

Approved by